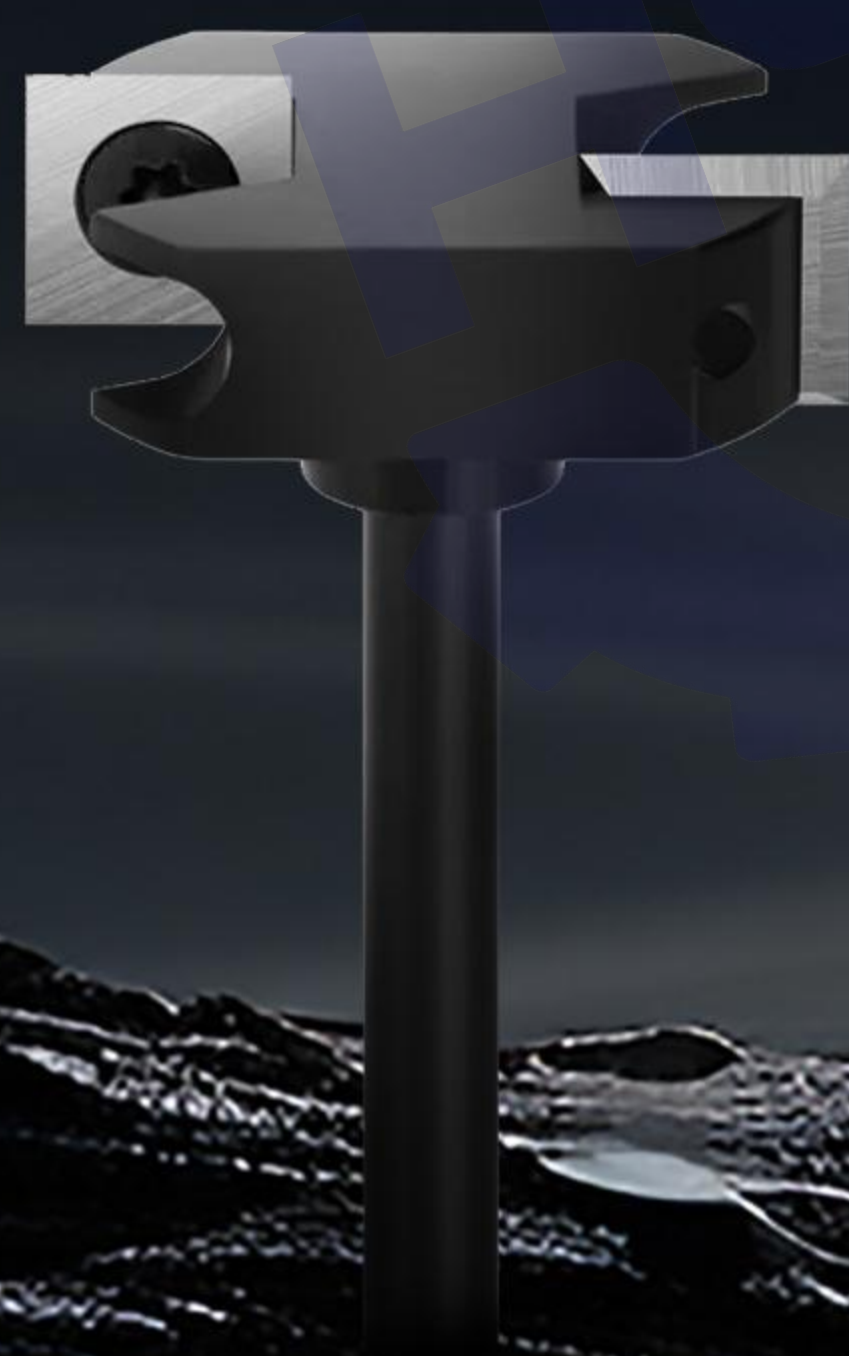


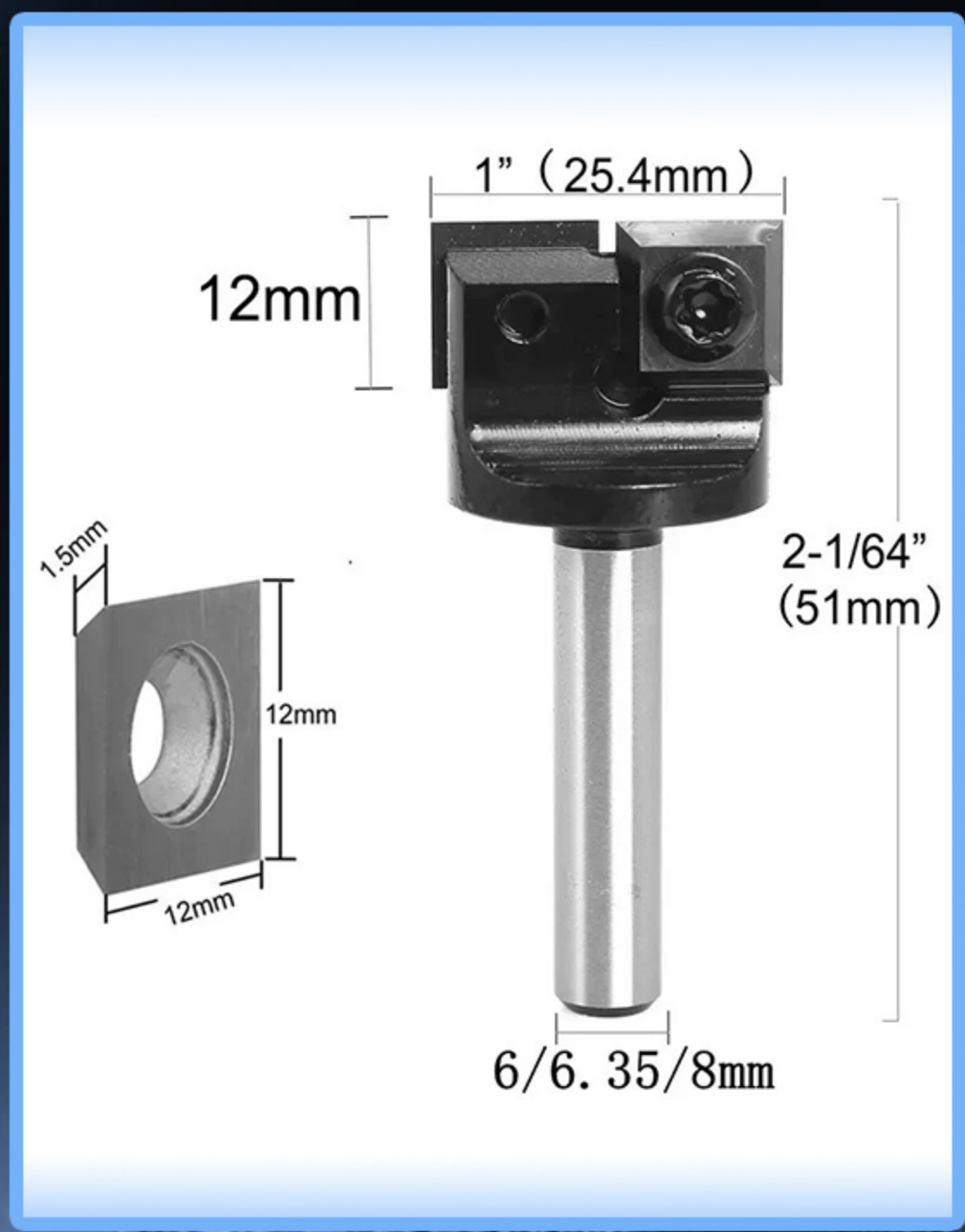
木工刀具

Woodworking Tools

2025 PRODUCTS BROCHURE



产品介绍 Product Introduction



产品: 2刃破板刀 (反转)

- 1: 多种板材都可用
- 2: 适用于木工封边条修圆弧手动工具
- 3: 木芯板、实木板、多层板、密度板、胶合板、刨花板、... 都可用
- 4: 刀口锋利, 坚固耐用
- 5: 使用方便

Product: 2-Blade Panel Cutter (Reverse Type)

- 1.Suitable for a variety of panel materials
- 2.Used as a manual tool for trimming rounded edges on woodworking edge banding
- 3.Can be used on core board, solid wood board, multi-layer board, MDF, plywood, particle board, etc.
- 4.Sharp blade, sturdy and durable
- 5.Easy to use

刃径/mm D	柄径/mm S	刃长/mm L	总长 H	改后激光镭雕标签 Laser-printed label	刀 粒 型 号 Insert Model	List Price 面价/元 (RMB)
25.4	6	12	51	S6-D25.4-H51-2T-1212	12*12*1.5*35°	60
	6.35	12	51	S6.35-D25.4-H51-2T-1212	12*12*1.5*35°	60
	8	12	51	S8-D25.4-H51-2T-1212	12*12*1.5*35°	60
38.1	12	12	62	S12-D38.1-H62-2T-1212	12*12*1.5*35°	70
	12.7	12	62	S12.7-D38.1-H62-2T-1212	12*12*1.5*35°	70



产品: 2刃破板刀 (正转)

- 1: 经过加厚设计, 强度更高, 更耐用
- 2: 使用方便, 具有良好的兼容性
- 3: 增强铣刀的抗震和切削速度, 夹持更紧不打滑
- 4: 圆柄倒角, 更易装夹
- 5: 精工品质, 每处都是匠心之作

Product: 2-Blade Panel Cutter (Standard Rotation)

- 1.Reinforced thickness design for higher strength and durability
- 2.Easy to use with excellent compatibility
- 3.Enhances vibration resistance and cutting speed of the milling cutter; provides tighter clamping without slipping
- 4.Round shank with chamfered edges for easier installation
- 5.Precision engineering quality, every detail crafted with expertise

刃径/mm D	柄径/mm S	刃长/mm L	总长 H	改后激光镭雕标签 Laser-printed label	刀 粒 型 号 Insert Model	List Price 面价/元 (RMB)
25.4	6	12	51	S6-D25.4-H51-2T-1212	12*12*1.5*35°	60
	6.35	12	51	S6.35-D25.4-H51-2T-1212	12*12*1.5*35°	60
	8	12	51	S8-D25.4-H51-2T-1212	12*12*1.5*35°	60
38.1	12	12	62	S12-D38.1-H62-2T-1212	12*12*1.5*35°	70
	12.7	12	62	S12.7-D38.1-H62-2T-1212	12*12*1.5*35°	70

产品: 轻切3刃破板刀

- 1: 锋利耐用, 切削光滑, 优质合金
- 2: 使用方便, 具有良好的兼容性
- 3: 材料调质后再精加工, 产品刚性稳定性更高
- 4: 先进的加工设备, 保证产品的精度
- 5: 刀口锋利, 坚固耐用

Product: Light-Cut 3-Flute Board Cutter/Slitter

- 1: Sharp & Durable, Smooth Cutting, High-Quality alloy
- 2: Easy to Use, Good Compatibility
- 3: Higher Rigidity and Stability via Finishing after Material Tempering
- 4: High Product Precision Ensured by Advanced Processing Equipment
- 5: Sharp Edge, Solid and Durable



刃径/mm D	柄径/mm S	刃长/mm L	总长 H	改后激光镭雕标签 Laser-printed label	刀 粒 型 号 Insert Model	List Price 面价/元 (RMB)
59	12	12	70	S12-D59-H70-3T*1212	12*12*1.5-35°	90
59	12.7	12	65	S12.7-D59-H65-3T-1212	12*12*1.5-35°	90
59	12	12	65	S12-D59-H65-3T-1212	12*12*1.5-35°	90
59	12.7	12	70	S12.7-D59-H70-3T*1212	12*12*1.5-35°	90
61	12	12	75	S12-D61-H75-3T-1212	12*12*1.5-35°	90
61	12.7	12	75	S12.7-D61-H75-3T-1212	12*12*1.5-35°	90
63.5	12	12	75	S12-D63.5-H75-3T-1212	12*12*1.5-35°	100
63.5	12.7	12	75	S12.7-D63.5-H75-3T-1212	12*12*1.5-35°	100
76.2	12	12	82	S12-D76.2-H82-3T-1212	12*12*1.5-35°	120
76.2	12.7	12	82	S12.7-D76.2-H82-3T-1212	12*12*1.5-35°	120

产品: 轻切3刃破板刀

- 1: 定位精准, 锋利耐磨
- 2: 采用先进热处理工艺, 硬度均匀
- 3: 材料调质后再精加工, 产品刚性稳定性更高
- 4: 设备兼容性强, 规格齐全

Product: Light-Cut 3-Flute Board Cutter/Slitter

- 1: Accurate Positioning, Sharp and Wear-Resistant
- 2: Uniform Hardness from Advanced Heat Treatment Process
- 3: Higher Rigidity and Stability via Finishing after Material Tempering
- 4: Strong Equipment Compatibility, Complete Specifications



刃径/mm D	柄径/mm S	刃长/mm L	总长 H	改后激光镭雕标签 Laser-printed label	刀 粒 型 号 Insert Model	List Price 面价/元 (RMB)
25.4	6.35	10.5	45	S6.35-D25.4-H45-3T-10.5	10.5*10.5*1.5-35°	60
35	6.35	10.5	62	S6.35-D35-H62-3T-10.5	10.5*10.5*1.5-35°	70
35	8	10.5	62	S8-D35-H62-3T-10.5	10.5*10.5*1.5-35°	70
37	8	12	62	S8-D35-H62-3T-10.5	12*12*1.5-35°	70
38.1	8	12	62	S8-D38.1-H62-3T-1212	12*12*1.5-35°	70
39	8	12	62	S8-D39-H62-3T-1212	12*12*1.5-35°	70
50.8	12	12	65	S12-D50.8-H65-3T-1212	12*12*1.5-35°	80
50.8	12.7	12	65	S12.7-D50.8-H65-3T-1212	12*12*1.5-35°	80
53	12	12	65	S12-D53-H65-3T-1212	12*12*1.5-35°	80
53	12.7	12	65	S12.7-D53-H65-3T-1212	12*12*1.5-35°	80

产品介绍 Product Introduction



重切4刃破板刀

- 1: 锋利耐用, 可替换刀片
- 2: 专业级木工铣刀
- 3: 使用方便兼容性强
- 4: 先进的加工设备, 保证产品的精度
- 5: 使用寿命长

Product: Heavy-Cut 4-Flute Board Cutter

- 1.Sharp and durable, replaceable blades
- 2.Professional-grade woodworking router bit
- 3.Easy to use with strong compatibility
- 4.Advanced processing equipment ensures product precision
- 5.Long service life

刃径/mm D	柄径/mm S	刃长/mm L	总长 H	改后激光镭雕标签 Laser-printed label	刀 粒 型 号 Insert Model	List Price 面价/元 (RMB)
40	8	12	62	S8-D40-H62-4T-1212	12*12*1.5-35°	80
40	12.7	12	62	S12.7-D40-H62-4T-1212	12*12*1.5-35°	80
50.8	12	12	65	S12-D50.8-H65-4T-1212	12*12*1.5-35°	100
50.8	12.7	12	65	S12.7-D50.8-H65-4T-1212	12*12*1.5-35°	100
63.5	12	12	75	S12-D63.5-H75-4T-1212	12*12*1.5-35°	120
63.5	12.7	12	75	S12.7-D63.5-H75-4T-1212	12*12*1.5-35°	120
76.2	12	12	82	S12-D76.2-H82-4T-1212	12*12*1.5-35°	140
76.2	12.7	12	82	S12.7-D76.2-H82-4T-1212	12*12*1.5-35°	140



轻切2+2T型破板刀

- 1: 四面可用, 可转位刀片
- 2: 便捷加高效
- 3: 精工制造, 持久耐用
- 4: 高端设备, 精湛技术
- 5: 专业的研发生产服务团队

Product: Light-Cut 2+2 T-Type Board Cutter

- 1.Four usable sides, indexable blades
- 2.Convenient and highly efficient
- 3.Precision engineered for lasting durability
- 4.Advanced equipment and sophisticated technology
- 5.Professional R&D, production, and service team

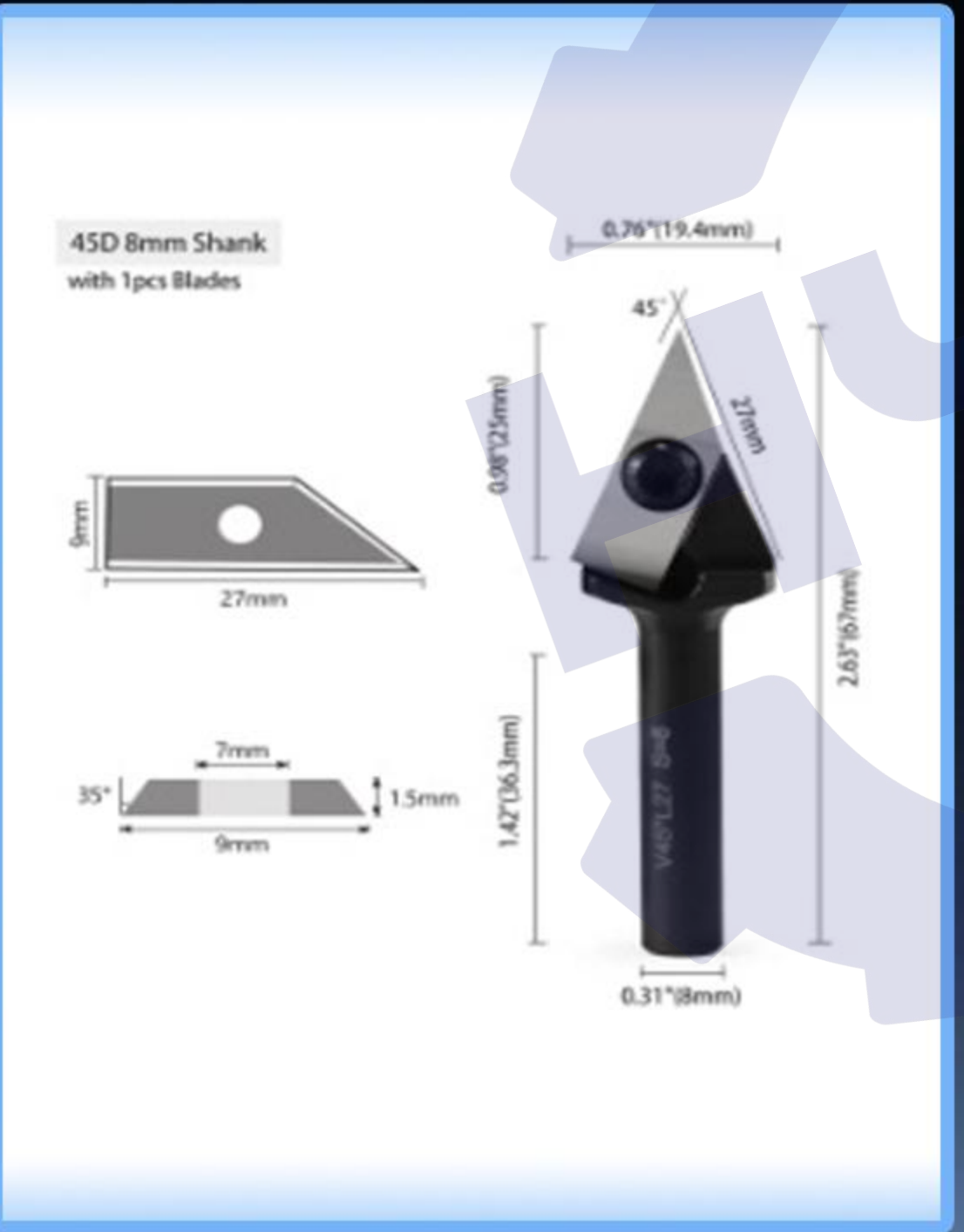
刃径/mm D	柄径/mm S	刃长/mm L	总长 H	改后激光镭雕标签 Laser-printed label	刀 粒 型 号 Insert Model	List Price 面价/元 (RMB)
25.4	6.35	10+10	45	S6.35-D25.4-H45-1010	10*10*2.2-30°	100
31.75	6.35	10+10	45	S6.35-D31.75-H45-1010	10*10*2.2-30°	100
38.1	8	12+14	58.8	S8-D38.1-H58.8-1214	*2.2-35° / 14*14*2.0	110
38.1	8	12+12	64.6	S8-D38.1-H64.6-1212	12*12*2.2-35°	110
38.1	12	12+12	64.6	S12-D38.1-H64.6-1212	12*12*2.2-35°	110
38.1	12.7	12+12	64.6	S12.7-D38.1-H64.6-1212	12*12*2.2-35°	110
45	12	12+12	66	S12-D45-H66-1212	12*12*2.2-35°	120
45	12.7	12+12	66	S12.7-D45-H66-1212	12*12*2.2-35°	120

45°/60°V型开槽刀(开口型)

- 1: 刀口锋利, 坚固耐用
- 2: 沉孔利器, 一次成型
- 3: 材料调质后再精加工, 产品刚性稳定性更高
- 4: 轻松省力

Product: 45°/60° V-Grooving Cutter (Open Type)

- 1.Sharp blade, sturdy and durable
- 2.Countersinking tool, forms in a single pass
- 3.Higher rigidity and stability from finishing after material tempering
- 4.Effortless and labor-saving



刃径/mm D	柄径/mm S	刃长/mm L	总长 H	改后激光镭雕标签 Laser-printed label	刀 粒 型 号 Insert Model	List Price 面价/元 (RMB)
19.4	6	25	67	V45-S6-D19.4-H67	27*9*1.5mm	36
19.4	6.35	25	67	V45-S6.35-D19.4-H67		36
19.4	12	25	67	V45-S12-D19.4-H67		36
19.4	12.7	25	67	V45-S12.7-D19.4-H67		36
21	6	25	67	V60-S6-D21-H67	27*9*1.5mm	40
21	6.35	25	67	V60-S6.35-D21-H67		40
21	12	25	67	V60-S12-D21-H67		40
21	12.7	25	67	V60-S12.7-D21-H67		40

90° V型开槽刀(开口)

- 1: 高效加工, 锋利耐磨
- 2: 精密加工, 硬度均匀
- 3: 材料调质后再精加工, 产品刚性稳定性更高
- 4: 严丝合缝, 精湛工艺
- 5: 贴合紧密, 持久耐用

Product: 90° V-Grooving Cutter (Open Type)

- 1.Efficient processing, sharp and wear-resistant
- 2.Precision machining, uniform hardness
- 3.Higher rigidity and stability from finishing after material tempering
- 4.Tight seams, exquisite craftsmanship
- 5.Tight fit, long-lasting durability



刃径/mm D	柄径/mm S	刃长/mm L	总长 H	改后激光镭雕标签 Laser-printed label	刀 粒 型 号 Insert Model	List Price 面价/元 (RMB)
16.9	6	12	62	V90-S6-D16.9-H62	12*12*1.5*35°	36
16.9	6.35	12	62	V90-S6.35-D16.9-H62	12*12*1.5*35°	36
16.9	8	12	62	V90-S8-D16.9-H62	12*12*1.5*35°	36
16.9	12	12	62	V90-S12-D16.9-H62	12*12*1.5*35°	36
16.9	12.7	12	62	V90-S12.7-D16.9-H62	12*12*1.5*35°	36
21	12	15	62	V90-S12-D21-H62	15*15*2.5*30°	40
21	12.7	15	62	V90-S12.7-D21-H62	15*15*2.5*30°	40

产品介绍 Product Introduction



90° V型破板开槽刀

- 1: 锋利耐用，切削光滑
- 2: 采用先进热处理工艺，硬度均匀
- 3: 定位精准，使用寿命长
- 4: 使用方便，具有良好的兼容性

Product: 90° V-Groove Board Cutter

- 1.Sharp and durable, smooth cutting
- 2.Advanced heat treatment ensures uniform hardness
- 3.Precise positioning, long service life
- 4.Easy to use with excellent compatibility

刃径/mm D	柄径/mm S	刃长/mm L	总长 H	改后激光镭雕标签 Laser-printed label	刀 粒 型 号 Insert Model	List Price 面价/元 (RMB)
38	12	20+30	76	V90-S12-D38-H76	12*20*1.5/12*30*1.5	70
38	12.7	20+30	76	V90-S12.7-D38-H76		70
56	12	30+40	76	V90-S12-D56-H76	12*30*1.5/12*40*1.5	90
56	12.7	30+40	76	V90-S12.7-D56-H76		90
38	12	40	76	V90-S12-D38-H76	菱形27*11*1.5	70
38	12.7	40	76	V90-S12.7-D38-H76	菱形27*11*1.5	70



120° V型破板开槽刀

- 1: 角度大，锋利耐用
- 2: 高硬度高耐磨
- 3: 材料调质后再精加工，产品刚性稳定性更高
- 4: 定位精准，使用寿命长

Product: 120° V-Groove Board Cutter

- 1.Large angle, sharp and durable
- 2.High hardness and wear resistance
- 3.Finishing after material tempering provides higher rigidity and stability
- 4.Precise positioning, long service life

刃径/mm D	柄径/mm S	刃长/mm L	总长 H	改后激光镭雕标签 Laser-printed label	刀 粒 型 号 Insert Model	List Price 面价/元 (RMB)
51.6	12	50	76	V120-D-S12-D51.6-H76	菱形30*11*1.5	90
51.6	12.7	50	76	V120-D-S12.7-D51.6-H76	菱形30*11*1.5	90

数控螺旋清底铣刀

- 1: 切割锋利，耐磨耐用
- 2: 超高精度，锋利坚韧
- 3: 持久高效，产品刚性稳定性更高
- 4: 先进的加工设备，品质保证

Product: CNC Spiral Bottom Cleaning Router Bit

- 1.Sharp cutting, wear-resistant and durable
- 2.Ultra-high precision, sharp and tough
- 3.Long-lasting efficiency, higher rigidity and stability
- 4.Advanced processing equipment ensures quality



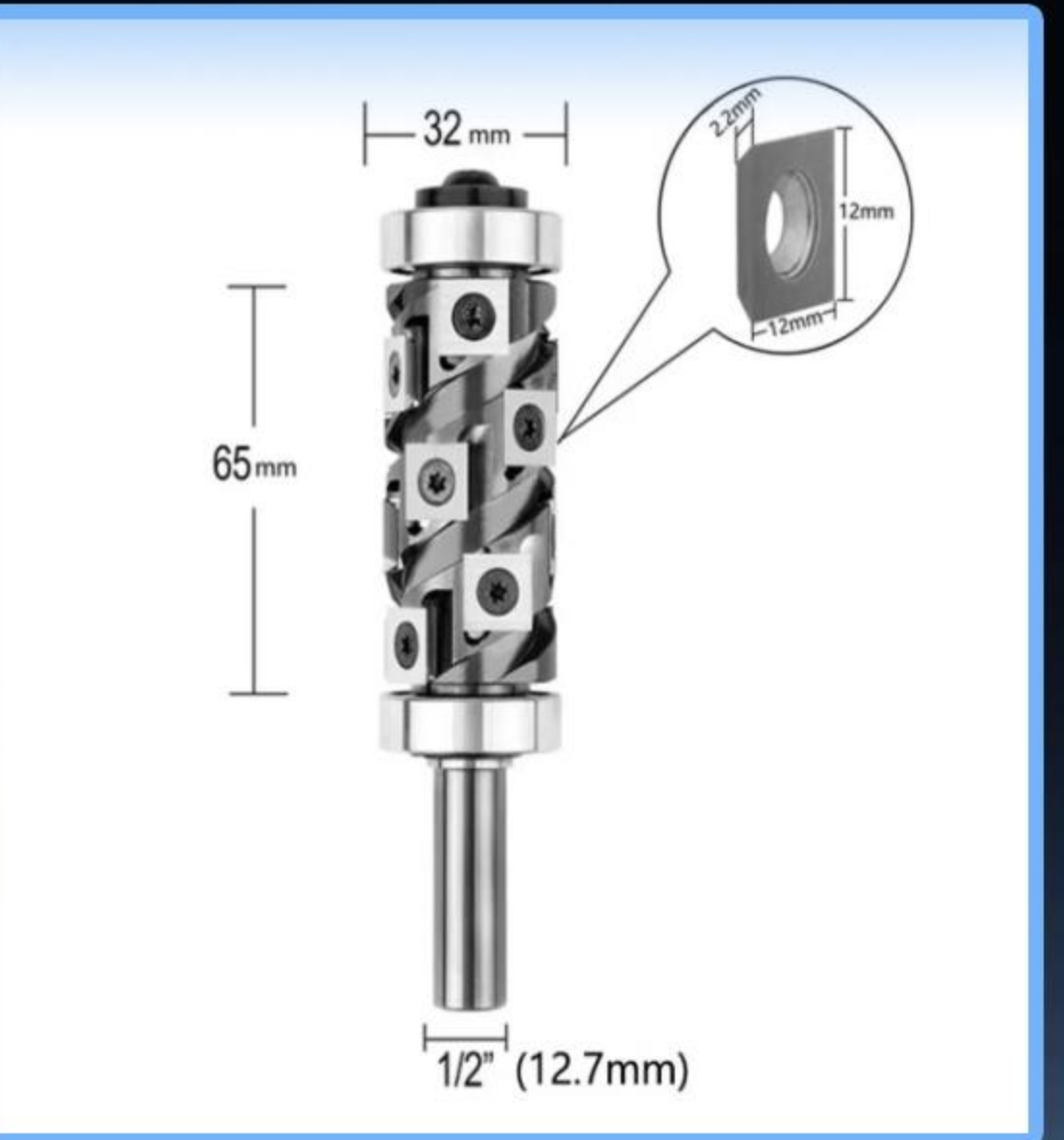
刃径/mm D	柄径/mm S	刃长/mm L	总长 H	改后激光镭雕标签 Laser-printed label	刀 粒 型 号 Insert Model	List Price 面价/元 (RMB)
32	16	60	60+45	S16-D32-L60-2T-1212	12*12*2.2-35°	180
32	20	60	60+45	S20-D32-L60-2T-1212	12*12*2.2-35°	180
32	16	80	80+45	S16-D32-L80-2T-1212	12*12*2.2-35°	200
32	20	80	80+45	S20-D32-L80-2T-1212	12*12*2.2-35°	200
32	16	100	100+45	S16-D32-L100-2T-1212	12*12*2.2-35°	220
32	20	100	100+45	S20-D32-L100-2T-1212	12*12*2.2-35°	220
32	16	120	120+45	S16-D32-L120-2T-1212	12*12*2.2-35°	240
32	20	120	120+45	S20-D32-L120-2T-1212	12*12*2.2-35°	240
24	12.7	50	50+45	S12.7-D24-L50-2T-1212	10.5*10.5*2.2-35°	165

双轴承螺旋修边刀

- 1: 耐磨性高，强度高更耐用
- 2: 高精度加工，硬度均匀
- 3: 材料调质后再精加工，产品刚性稳定性更高
- 4: 有效增加工作效率
- 5: 不易断刀，高速耐热

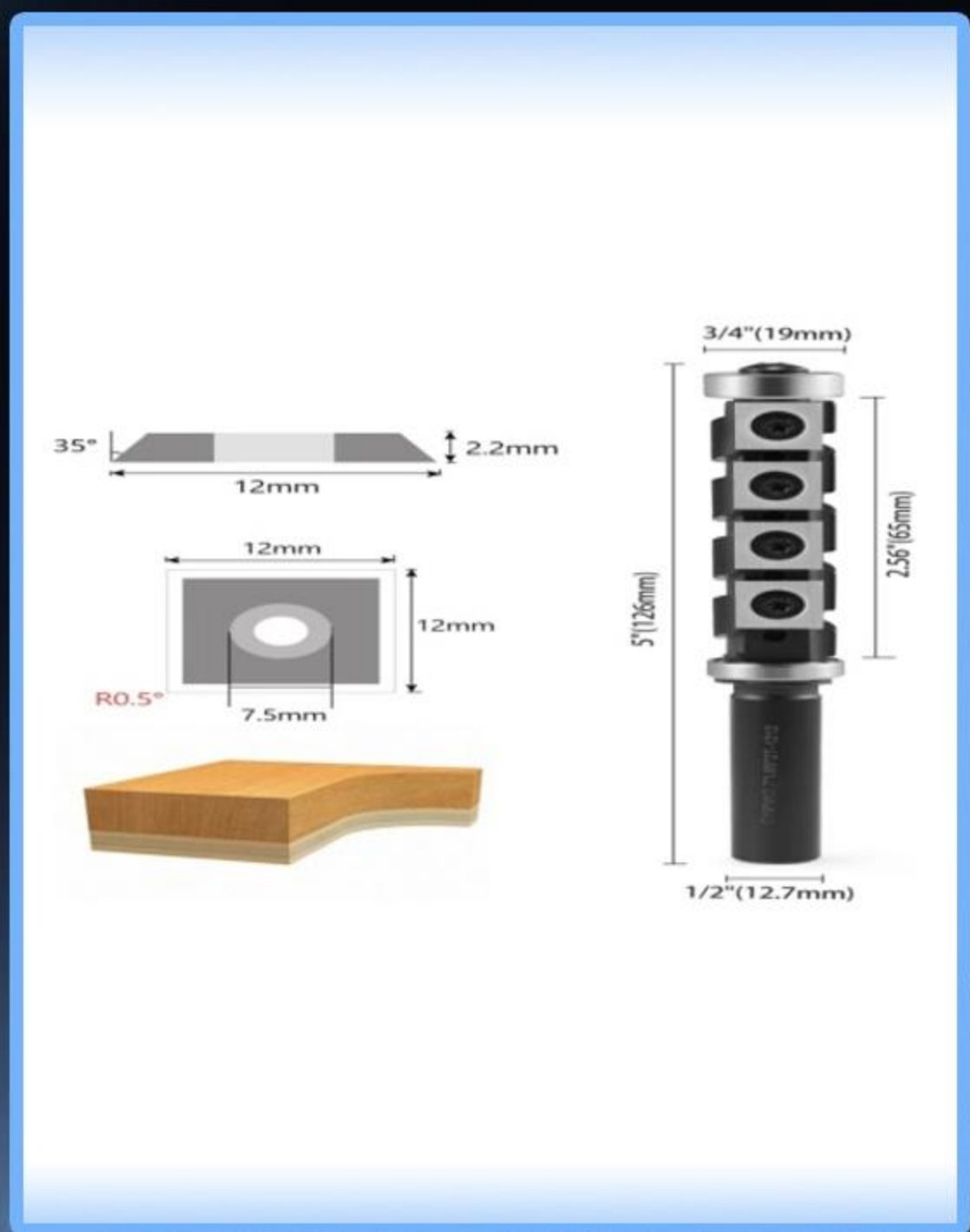
Product: Double Bearing Spiral Trimming Router Bit

- 1.High wear resistance, high strength, more durable
- 2.High-precision machining, uniform hardness
- 3.Finishing after material tempering for higher rigidity and stability
- 4.Effectively increases work efficiency
- 5.Break-resistant, high-speed and heat-resistant



刃径/mm D	柄径/mm S	刃长/mm L	总长 H	改后激光镭雕标签 Laser-printed label	刀 粒 型 号 Insert Model	List Price 面价/元 (RMB)
19	12.7	50	柄长45	S12.7-D19-L50-2T-105	10.5*10.5*2.2-35°	150
19	12.7	65	柄长45	S12.7-D19-L65-2T-105	10.5*10.5*2.2-35°	160
24	12.7	50	柄长45	S12.7-D24-L50-2T-1212	12*12*2.2-35°	150
24	12.7	65	柄长45	S12.7-D24-L65-2T-1212	12*12*2.2-35°	180
24	12.7	85	柄长45	S12.7-D24-L85-2T-1212	12*12*2.2-35°	200
30	12.7	45	柄长45	S12.7-D30-L45-2T-1212	12*12*2.2-35°	160
30	12.7	55	柄长45	S12.7-D30-L55-2T-1212	12*12*2.2-35°	180
30	12.7	65	柄长45	S12.7-D30-L65-2T-1212	12*12*2.2-35°	200
30	12	65	柄长45	S12-D30-L65-2T-1212	12*12*2.2-35°	200
30	12.7	85	柄长45	S12.7-D30-L85-2T-1212	12*12*2.2-35°	240
30	16	55	柄长45	S16-D30-L55-2T-1212	12*12*2.2-35°	180
30	16	65	柄长45	S16-D30-L65-2T-1212	12*12*2.2-35°	200
30	16	85	柄长45	S16-D30-L85-2T-1212	12*12*2.2-35°	240

产品介绍 Product Introduction



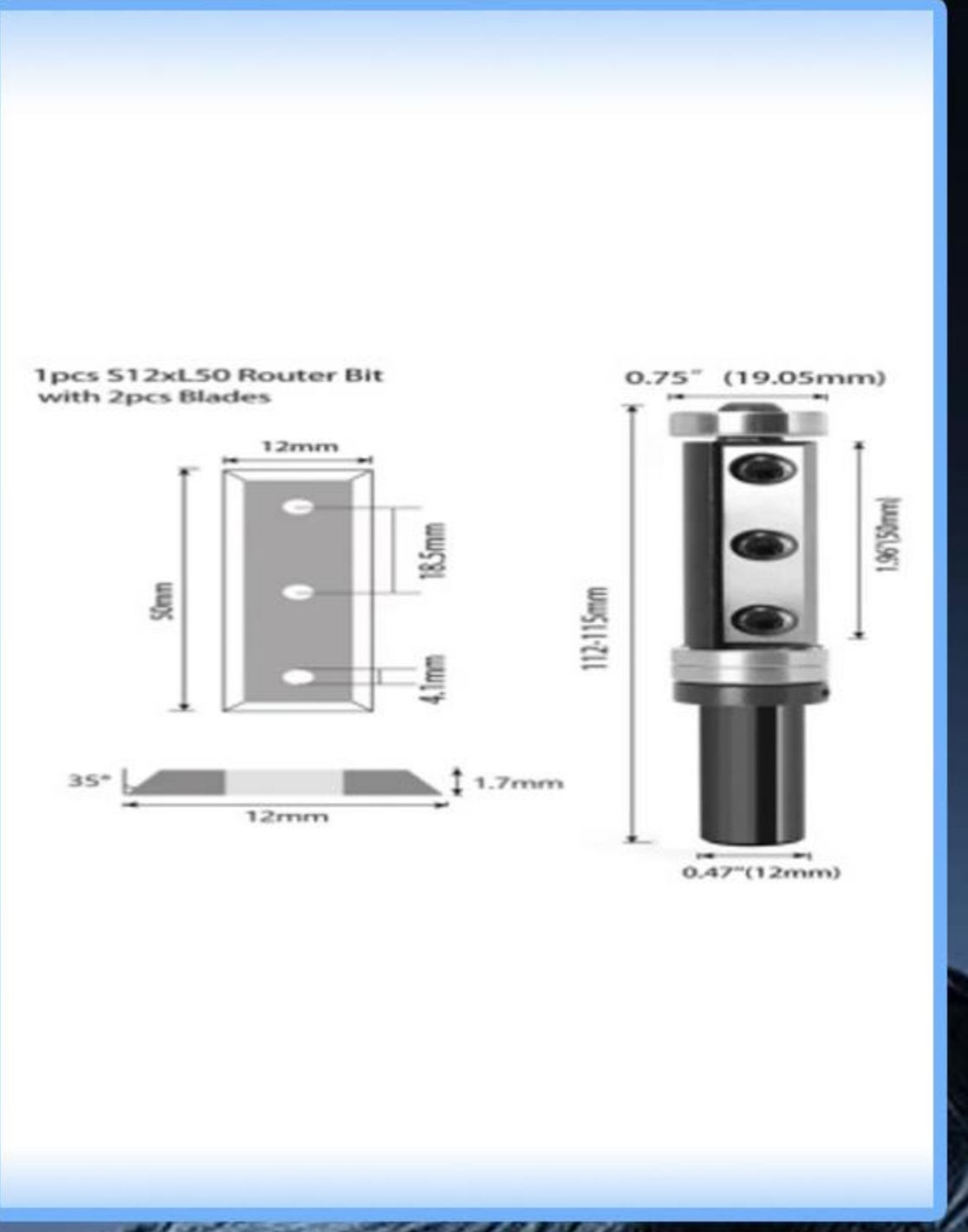
上下轴承侧螺旋修边刀

- 1: 锋利耐磨，拆卸方便
- 2: 硬度均匀，更耐用
- 3: 使用方便，具有良好的兼容性
- 4: 圆柄倒角，更易装夹

Product: Top & Bottom Bearing Spiral Trimming Bit

- 1.Sharp and wear-resistant, easy to disassemble
- 2.Uniform hardness, more durable
- 3.Easy to use with good compatibility
- 4.Chamfered shank for easier clamping

刃径/mm D	柄径/mm S	刃长/mm L	总长 H	改后激光镭雕标签 Laser-printed label	刀 粒 型 号 Insert Model	List Price 面价/元 (RMB)
19	12	50	柄长45	S12-D19-L50--2T	12*12*2. 2-35°	60
19	12. 7	50		S12. 7-D19-L50-2T	12*12*2. 2-35°	60
19	12	65		S12-D19-L65-2T	12*12*2. 2-35°	60
19	12. 7	65		S12. 7-D19-L65-2T	12*12*2. 2-35°	60



上下轴承侧螺旋修边刀
(柄部双轴承)

- 1: 双轴承设计
- 2: 圆柄设计，更易装夹
- 3: 材料调质后再精加工，产品刚性稳定性更高
- 4: 定位精准，锋利耐磨

Product: Top & Bottom Bearing Spiral Trimming Bit (Double Bearings on Shank)

- 1.Double bearing design
- 2.Round shank design for easier clamping
- 3.Finishing after material tempering provides higher rigidity and stability
- 4.Precise positioning, sharp and wear-resistant

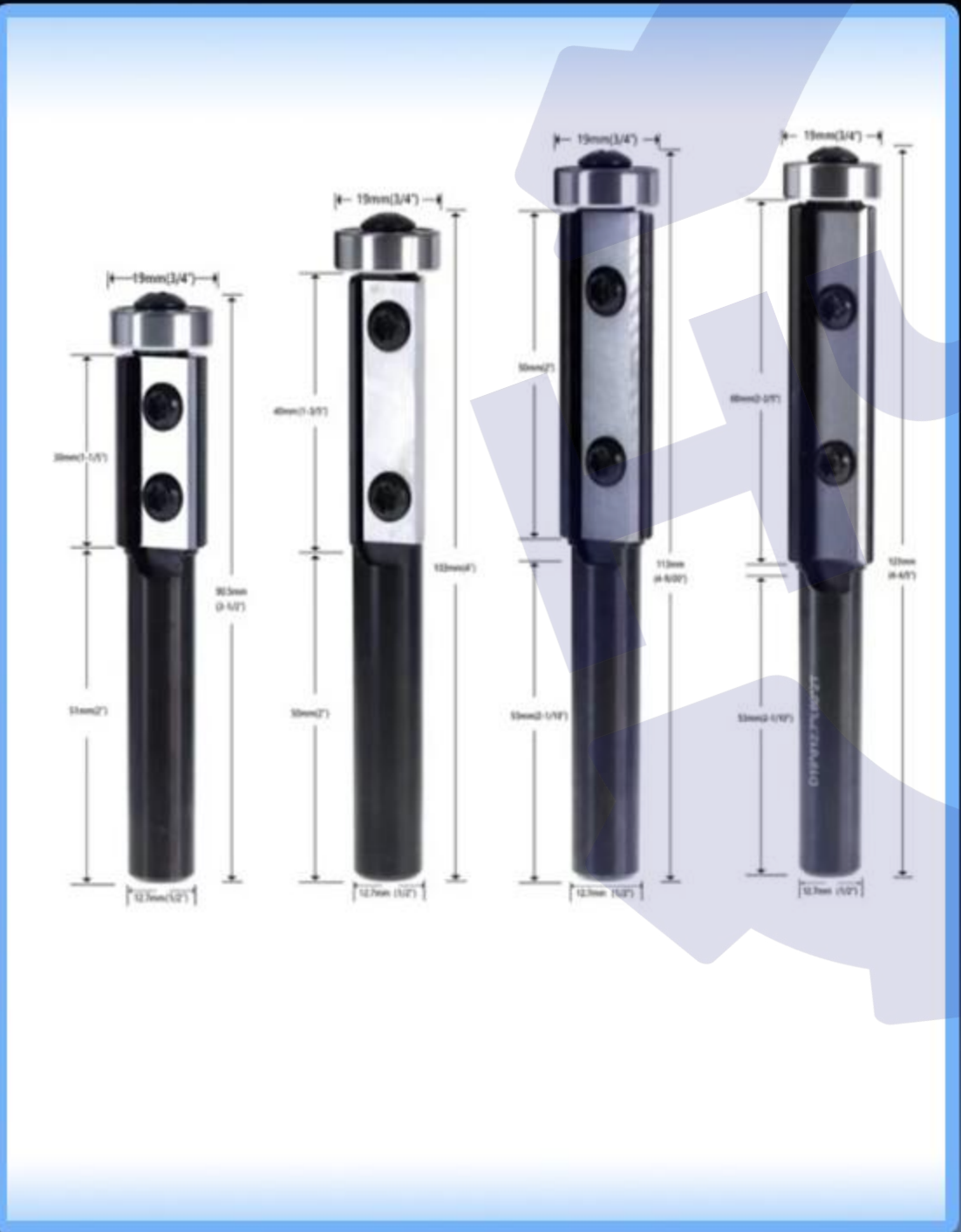
刃径/mm D	柄径/mm S	刃长/mm L	总长 H	改后激光镭雕标签 Laser-printed label	刀 粒 型 号 Insert Model	List Price 面价/元 (RMB)
19	12. 7	65	108	S12. 7-D19-L65-H126	12*12*2. 2-35°	60
19. 05	12	50	108	S12-D19. 05-H108-5017	50*12*1. 7*35° 3孔	60
19. 05	12. 7	50	108	S12. 7-D19. 05-H108-5017	50*12*1. 7*35° 3孔	60

上轴承修边刀

- 1: 修边无毛刺，切削流畅
- 2: 采用先进热处理工艺，硬度均匀
- 3: 精工品质，每一处都是匠心之作
- 4: 规格齐全，放心选购

Product: Top Bearing Trimming Bit

- 1.Clean trimming without burrs, smooth cutting
- 2.Advanced heat treatment ensures uniform hardness
- 3.Precision craftsmanship, every detail reflects masterful workmanship
- 4.Comprehensive specifications for assured selection



刃径/mm D	柄径/mm S	刃长/mm L	总长 H	改后激光镭雕标签 Laser-printed label	刀 粒 型 号 Insert Model	List Price 面价/元 (RMB)
19	6	12	53	S6-D19-L12-H53-2T	12*12*1. 5*35°	50
19	6. 35	12	53	S6. 35-D19-L12-H53-2T	12*12*1. 5*35°	50
19	8	20	71	S8-D19-L20H71--2T	20*12*1. 5-35°	50
19	12. 7	20	71	S12. 7-D19-L20-H71-2T	20*12*1. 5-35°	50
19	12. 7	30	90. 5	S12. 7-D19-L30-H90. 5-2T	30*12*1. 5-35°	50
19	12. 7	40	103	S12. 7-D19-L40-H103-2T	40*12*1. 5-35°	50
19	12. 7	50	113	S12. 7-D19-L50-H113-2T	50*12*1. 5-35°	50
19	12. 7	60	123	S12. 7-D19-L60-H123-2T	60*12*1. 5-35°	50

清底开槽直刀

- 1: 采用高端42CRMO材料
- 2: 硬度均匀，定位精准
- 3: 材料调质后再精加工，产品刚性稳定性更高
- 4: 先进的加工设备，保证产品的精度

Product: Bottom Cleaning & Grooving Straight Bit

- 1.Made of high-end 42CrMo material
- 2.Uniform hardness, precise positioning
- 3.Finishing after material tempering provides higher rigidity and stability
- 4.Advanced processing equipment guarantees product precision



刃径/mm D	柄径/mm S	刃长/mm L	总长 H	改后激光镭雕标签 Laser-printed label	刀 粒 型 号 Insert Model	List Price 面价/元 (RMB)
19	12. 7	30	89	S12. 7-D19-L30-H89-2T	30*12*1. 5-4*35°	40
19	12. 7	40	99	S12. 7-D19-L40-H99-2T	40*12*1. 5-4*35°	40
19	12. 7	50	109	S12. 7-D19-L50-H109-2T	50*12*1. 5-4*35°	40
19	12. 7	60	119	S12. 7-D19-L50-H119-2T	60*12*1. 5-4*35°	40



产品介绍 Product Introduction



舍弃式斜角刀

- 1: 切削锋利，坚固耐磨
- 2: 硬度均匀，更耐用
- 3: 严丝合缝，螺丝紧固
- 4: 定位精准

Disposable Chamfer Cutter

- 1: Sharp cutting edge, sturdy and wear-resistant
- 2: Uniform hardness, more durable
- 3: Tight fit, securely fastened with screws
- 4: Precise positioning

刃径/mm D	柄径/mm S	刃长/mm L	总长 H	改后激光镭雕标签 Laser-printed label	刀粒型号 Insert Model	List Price 面价/元 (RMB)
21.6	6.35	12	57	S6.35-D21.6-H57-15°	12*12*1.5*35°	50
27	6.35	12	57	S6.35-D27-L12-H57-45°	12*12*1.5*35°	50
27	8	12	57	S8-D27-L12-H57-45°	12*12*1.5*35°	50
32	8	12	57	S8-D32-L12-H57-45°	12*12*1.5*35°	50



R斜角刀

- 1: 锋利耐磨，精准定位
- 2: 圆柄设计，更易装夹
- 3: 材料调质后再精加工，产品刚性稳定性更高
- 4: 定位精准

R Chamfer Cutter

- 1: Sharp and wear-resistant, precise positioning
- 2: Round shank design for easier clamping
- 3: Made from tempered material and then precision machined, resulting in higher product rigidity and stability
- 4: Precise positioning

刃径/mm D	柄径/mm S	刃长/mm L	总长 H	改后激光镭雕标签 Laser-printed label	刀粒型号 Insert Model	List Price 面价/元 (RMB)
27	6	12	58	S6-D27-R1.6-L12-H58	12*12*1.5*R1.6	60
27	6.35	12	58	S6.35-D27-R1.6-L12-H58	12*12*1.5*R1.6	60
27	6	12	58	S6-D27-R3-L12-H58	12*12*1.5*R3	60
27	6.35	12	58	S6.35-D27-R3-L15.9-H58	12*12*1.5*R3	60

R圆弧修边刀

- 1: 修边无毛刺，切削流畅
- 2: 采用先进热处理工艺，硬度均匀
- 3: 圆柄设计，更易装夹
- 4: 纹路清晰，锋利耐磨

R Arc Edge Trimming Cutter

- 1: Burr-free edge trimming, smooth cutting
- 2: Advanced heat treatment process ensures uniform hardness
- 3: Round shank design for easier clamping
- 4: Clear pattern, sharp and wear-resistant



刃径/mm D	柄径/mm S	刃长/mm L	总长 H	改后激光镭雕标签 Laser-printed label	刀粒型号 Insert Model	List Price 面价/元 (RMB)
27	6	15.9	60	S6-D27-R6.35-L15.9-H60	15.9*9*1.5*R6.35	60
27	8	15.9	60	S8-D27-R6.35-L15.9-H60	15.9*9*1.5*R6.35	60
27	8	15.9	60	S8-D27-R2-L15.9-H60	15.9*9*1.5*R2	60
27	8	15.9	60	S8-D27-R3-L15.9-H60	15.9*9*1.5*R3	60
27	8	15.9	60	S8-D27-R4-L15.9-H60	15.9*9*1.5*R4	60
27	8	15.9	60	S8-D27-R5-L15.9-H60	15.9*9*1.5*R5	60

上下轴承修边刀
(柄部) 双轴承

- 1: 刀片锋利，硬度均匀
- 2: 定位精准，更耐用
- 3: 可拆卸式刀片
- 4: 坚固不断刀

Double Bearing Trim Cutter (Shank Type) with Upper and Lower Bearings

- 1.Sharp blade with uniform hardness
- 2.Precise positioning, more durable
- 3.Detachable blade design
- 4.Sturdy and break-resistant



刃径/mm D	柄径/mm S	刃长/mm L	总长 H	改后激光镭雕标签 Laser-printed label	刀粒型号 Insert Model	List Price 面价/元 (RMB)
19	12.7	30	柄长45	S12.7-D19-L30	30*12*1.5*35°	60
19	12.7	40	柄长45	S12.7-D19-L40	40*12*1.5*35°	60
19	12.7	50	柄长45	S12.7-D19-L50	50*12*1.5*35°	60
19	12.7	60	柄长45	S12.7-D19-L60	60*12*1.5*35°	60
19	12	30	柄长45	S12-D19-L30	30*12*1.5*35°	60
19	12	40	柄长45	S12-D19-L40	40*12*1.5*35°	60
19	12	50	柄长45	S12-D19-L50	50*12*1.5*35°	60
19	12	60	柄长45	S12-D19-L60	60*12*1.5*35°	60
19	12.7	30	柄长45	S12.7-D19-L30-1212	12*12*1.5*35°	60
19	12.7	40	柄长45	S12.7-D19-L40-1212	12*12*1.5*35°	60
19	12.7	50	柄长45	S12.7-D19-L50-1212	12*12*1.5*35°	60
19	12.7	60	柄长45	S12.7-D19-L60-1212	12*12*1.5*35°	60
19	12	30	柄长45	S12-D19-L30-1212	12*12*1.5*35°	60
19	12	40	柄长45	S12-D19-L40-1212	12*12*1.5*35°	60
19	12	50	柄长45	S12-D19-L50-1212	12*12*1.5*35°	60
19	12	60	柄长45	S12-D19-L60-1212	12*12*1.5*35°	60

产品介绍 Product Introduction



斜齿破板刀

- 1: 便捷高效, 拆卸方便
- 2: 硬度均匀, 持久耐用
- 3: 使用方便, 具有良好的兼容性
- 4: 高端设备, 精湛技术

Helical Flute Panel Cutter

- 1.Convenient and efficient, easy to disassemble
- 2.Uniform hardness, long-lasting durability
- 3.Easy to use with good compatibility
- 4.High-end equipment, exquisite craftsmanship

刃径/mm D	柄径/mm S	刃长/mm L	总长 H	改后激光镭雕标签 Laser-printed label	刀 粒 型 号 Insert Model	List Price 面价/元 (RMB)
38.1	6.35		57	S6.35-D38.1-H57-3T	10.5*10.5*1.5-35° 2C	70
38.1	8		57	S8-D38.1-H57-3T		70
63.5	12		70	S12-D63.5-H70-3T		90
63.5	12.7		70	S12.7-D63.5-H70-3T		90



2刃破板刀

- 1: 刀片锋利, 可拆卸设计
- 2: 圆柄设计, 更易装夹
- 3: 材料调质后再精加工, 产品刚性 稳定性更高
- 4: 定位精准, 锋利耐磨

2-Flute Panel Cutter

- 1.Sharp blade with detachable design
- 2.Round shank design for easier clamping
- 3.Precision machining after material tempering ensures higher rigidity and stability
- 4.Precise positioning, sharp and wear-resistant

刃径/mm D	柄径/mm S	刃长/mm L	总长 H	改后激光镭雕标签 Laser-printed label	刀 粒 型 号 Insert Model	List Price 面价/元 (RMB)
38.1	6.35	12	53	S6.35-D38.1-H53-2T	12*12*1.5*35°	70
38.1	12.7	12	55.5	S12.7-D38.1-H55.5-2T	12*12*1.5*35°	70

重切2+2T型破板刀

- 1: 质量过硬, 轻松省力
- 2: 用心制造, 精湛工艺
- 3: 圆柄设计, 更易装夹
- 4: 规格齐全, 放心选购

Heavy-Duty 2+2T Panel Cutter

- 1.Superior quality for effortless use
- 2.Meticulously crafted with precision
- 3.Round shank design for easy clamping
- 4.Complete specifications for worry-free selection



刃径/mm D	柄径/mm S	刃长/mm L	总长 H	改后激光镭雕标签 Laser-printed label	刀 粒 型 号 Insert Model	List Price 面价/元 (RMB)
50.8	12	14+14	73.5	S12-D50.8-H73.5-2T+2-1414	14*14*2.0-30°	130
50.8	12.7	14+14	73.5	S12.7-D50.8-H73.5-2T+2-1414	14*14*2.0-30°	130
63.5	12	14+14	73.5	S12-D63.5-H73.5-2T+2-1414	14*14*2.0-30°	140
63.5	12.7	14+14	73.5	S12.7-D63.5-H73.5-2T+2-1414	14*14*2.0-30°	140
76.2	12	14*14	73.5	S12-D76.2-H73.5-2T+2-1414	14*14*2.0-30°	150
76.2	12.7	14+14	73.5	S12.7-D76.2-H73.5-2T+2-1414	14*14*2.0-30°	150

以上木工刀具

产品亮点:

- 1: 采用高端42CRMO材料
- 2: 采用先进热处理工艺, 硬度均匀,
- 3: 材料调质后再精加工, 产品刚性 稳定性更高
- 4: 先进的加工设备, 保证产品的精度
- 5: 专业的研发 生产服务团队

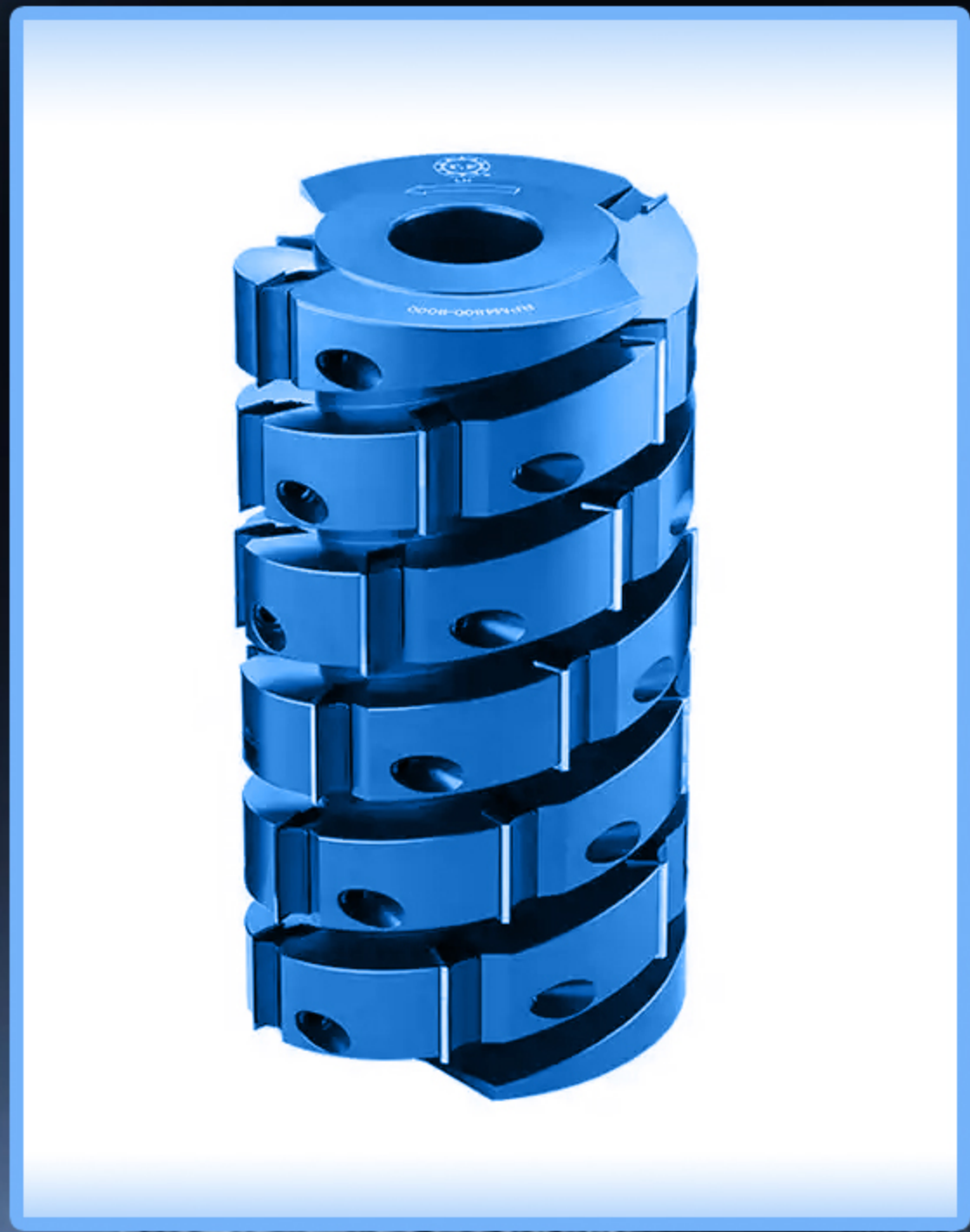
6: 全部产品库存式销售, 保证时效性

woodworking Tool Product Highlights

- 1.Made of premium 42CrMo alloy steel
- 2.Advanced heat treatment ensures uniform hardness
- 3.Precision machining after tempering for enhanced rigidity and stability
- 4.State-of-the-art equipment guarantees superior accuracy
- 5.Professional R&D and production service team
- 6.Full range available from stock for timely delivery



产品介绍 Product Introduction



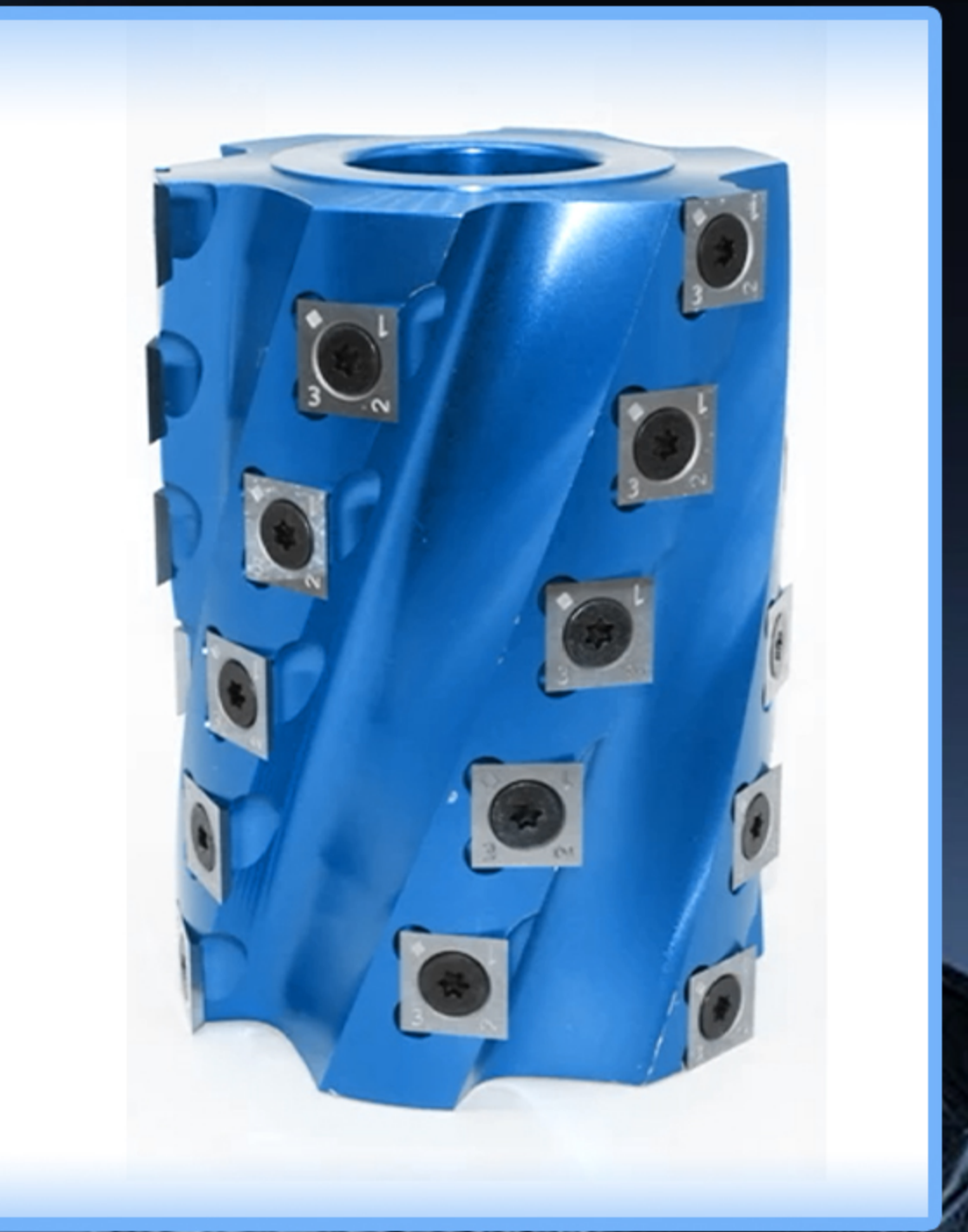
产品: 舍弃式重切螺旋刀

- 1: 锋利耐磨
- 2: 高精密 高平衡 有效增加工作效率
- 3: 高频转速, 超低噪音
- 4: 刀口锋利, 坚固耐用
- 5: 稳定性高

Product: Heavy-Duty Replaceable Spiral Cutter

- 1.Sharp and wear-resistant
- 2.High precision and balance for improved work efficiency
- 3.High-frequency rotation with ultra-low noise
- 4.Sharp edge, durable and robust
- 5.High stability

产品规格	直径	切削厚度	孔径	螺旋槽数	刀片数量
PART NO.	D	H	BORE	T	Number of Insert
90X60X35	90	60	30(35)	6	12
90X80X35	90	80	30(35)	6	18
90X100X35	90	100	30(35)	6	22
90X120X35	90	120	30(35)	6	26
90X130X35	90	130	30(35)	6	28
90X150X35	90	150	30(35)	6	32
90X180X35	90	180	30(35)	6	38
90X200X35	90	200	30(35)	6	42
100X60X35(40)	100	60	35(40)	6	12
100X80X35(40)	100	80	35(40)	6	18
100X100X35(40)	100	100	35(40)	6	22
100X120X35(40)	100	120	35(40)	6	26
100X130X35(40)	100	130	35(40)	6	28
100X150X35(40)	100	150	35(40)	6	32
100X180X35(40)	100	180	35(40)	6	38
100X200X35(40)	100	200	35(40)	6	42
125X60X35(40)	125	60	35(40)	6	12
125X80X35(40)	125	80	35(40)	6	18
125X100X35(40)	125	100	35(40)	6	22
125X120X35(40)	125	120	35(40)	6	26
125X130X35(40)	125	130	35(40)	6	28
125X150X35(40)	125	150	35(40)	6	32
125X180X35(40)	125	180	35(40)	6	38
125X200X35(40)	125	200	35(40)	6	42
125X230X35(40)	125	230	35(40)	6	48



产品: 舍弃式轻切螺旋刀

- 1: 坚固耐用 高速耐热不变形
- 2: 多种材料轻松应对
- 3: 高频转速, 超低噪音
- 4: 刀口锋利, 坚固耐用
- 5: 有效增加工作效率

Product: Light-Duty Replaceable Spiral Cutter

- 1.Durable, heat-resistant, and deformation-free at high speeds
- 2.Suitable for various materials, easy to handle
- 3.High-frequency rotation with ultra-low noise
- 4.Sharp edge, sturdy and long-lasting
- 5.Effectively increases work efficiency

产品规格	直径	切削厚度	孔径	螺旋槽数	刀片数量
PART NO.	D	H	BORE	T	Number of Insert
90X60X35	90	60	30(35)	6	12
90X80X35	90	80	30(35)	6	18
90X100X35	90	100	30(35)	6	22
90X120X35	90	120	30(35)	6	26
90X130X35	90	130	30(35)	6	28
90X150X35	90	150	30(35)	6	32
90X180X35	90	180	30(35)	6	38
90X200X35	90	200	30(35)	6	42
100X60X35(40)	100	60	35(40)	6	12
100X80X35(40)	100	80	35(40)	6	18
100X100X35(40)	100	100	35(40)	6	22
100X120X35(40)	100	120	35(40)	6	26
100X130X35(40)	100	130	35(40)	6	28
100X150X35(40)	100	150	35(40)	6	32
100X180X35(40)	100	180	35(40)	6	38
100X200X35(40)	100	200	35(40)	6	42
125X60X35(40)	125	60	35(40)	6	12
125X80X35(40)	125	80	35(40)	6	18
125X100X35(40)	125	100	35(40)	6	22
125X120X35(40)	125	120	35(40)	6	26
125X130X35(40)	125	130	35(40)	6	28
125X150X35(40)	125	150	35(40)	6	32
125X180X35(40)	125	180	35(40)	6	38
125X200X35(40)	125	200	35(40)	6	42
125X230X35(40)	125	230	35(40)	6	48

Xiamen HYW precision technology co.,ltd
www.hywprecision.com
Phone/Whatsapp: +86 18259466080

